

## General information

Location: All workshops are held at The Pyle Center, 702 Langdon St., Madison. The building is wheelchair accessible.

Schedule: Registration is 8–8:30 am.

Workshops run from 8:30 am–12:30 pm each day.

Fee: \$59 per workshop. Fee includes instruction, materials, refreshment breaks, CEU, and a nonrefundable administrative fee of \$20.

Program information: Contact Kristi Obmascher at phone: 608-262-8971 or e-mail: kobmascher@dcs.wisc.edu.

Accommodations: Make your own travel/lodging arrangements. Accommodation and parking information are sent with your registration confirmation, or check our Web site: [www.dcs.wisc.edu/pda/geninfo.htm](http://www.dcs.wisc.edu/pda/geninfo.htm)

Cancellation policy: If you are not able to attend the program, you are welcome to send a substitute. If you must cancel and do so up to three business days prior to the program, you will receive a full refund minus the \$20 administrative fee. If you cancel less than three business days prior to the program, or do not attend, you are responsible for the entire fee.

Program cancellations: In the event of bad weather or other emergencies, call 608-263-4432 or visit [www.dcs.wisc.edu](http://www.dcs.wisc.edu) to learn whether a Continuing Studies program or class has been cancelled.

Approved credits: Credits awarded upon completion of each workshop. Each workshop includes four hours of continuing education (0.4 CEU).

Social workers: The University of Wisconsin–Madison, Professional Development and Applied Studies (provider #1042), is approved as a provider for social work continuing education by the Association of Social Work Boards (ASWB) through the Approved Continuing Education (ACE) program. PDAS maintains responsibility for the program. Wisconsin, Iowa and Minnesota Boards of Social Work recognize ACE programs. MN Board of Social Work CE Approval Number: 06-138. IL Registered Social Worker Continuing Education Sponsor #159.000243.

Counselors: PDAS is recognized by the National Board for Certified Counselors to offer continuing education for National Certified Counselors. PDAS adheres to NBCC continuing education guidelines. (provider # 5990).

Wisconsin psychologists, and marriage and family therapists: This series qualifies as an accredited university continuing education course relevant to professional practice.

Wisconsin Substance Abuse Counselors: This series qualifies as a continuing education course consisting of relevant subject matter taught by qualified presenters.

Educators: This program may qualify towards your Professional Development Plans (PDPs).

Other professions: Completion of each program qualifies for 4 continuing education hours. Contact your own board or organization for specific continuing education requirements.

NONPROFIT ORG  
US POSTAGE  
PAID  
MADISON WI  
PERMIT NO 658

 **CONTINUING STUDIES**  
University of Wisconsin–Madison  
21 N. Park Street, 7th Floor  
Madison WI 53715-1218

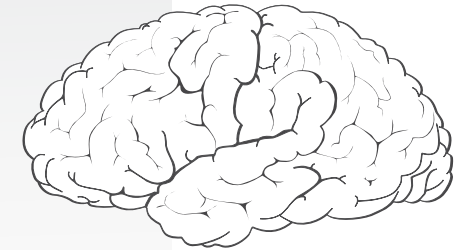
**Four-part Series on the Human Brain**  
Monday, October 5; Monday, October 19;  
Friday, November 13; Friday, December 11



**CONTINUING STUDIES**  
University of Wisconsin–Madison

Fall 2009

## Four-part Series on the Human Brain



Overview of brain structure and function

October 5, 2009

Impact of prenatal alcohol use  
on brain development

October 19, 2009

Impact of alcohol and other drugs  
on the human brain

November 13, 2009

Demystifying the adolescent brain

December 11, 2009

The Pyle Center, 702 Langdon St

Sponsored by:  
UW-Madison Continuing Studies  
Professional Development and Applied Studies

Cosponsored by:  
University of Wisconsin, School of Medicine and  
Public Health, Dept. of Family Medicine, Great Lakes  
FASD Regional Training Center (GLFRTC)

[www.dcs.wisc.edu/pda/aoda](http://www.dcs.wisc.edu/pda/aoda)

## Registration Form

### Four-part Series on the Human Brain

Overview of brain structure and function

Monday, October 5; Fee: \$59 Prog. #8705

Impact of prenatal alcohol use on brain development

Monday, October 19; Fee: \$59 Prog. #8706

Impact of alcohol and other drugs on the human brain

Friday, November 13; Fee: \$59 Prog. #8707

Demystifying the adolescent brain

Friday, December 11; Fee: \$59 Prog. #8708

Enter 3-digit code from mail panel: UW# W55

Name

Organization

Address

street

city / state / zip

Phone ( )

area code daytime number / evening number

E-mail

Information used to contact you about your registration and for future marketing

Enclosed is my check/money order, payable to UW-Madison.

Please charge to the following account:

MasterCard VISA American Express

Card No.

Expires

Cardholder's Name



Clip and mail to: UW-Extension Registrations, Pyle Center  
Dept. 102, 702 Langdon Street  
Madison, WI 53706-1487



Call: 608-262-7942 (TDD 608-265-2370)



Fax: 608-265-3163 or toll-free 800-741-7416



Online: [www.dcs.wisc.edu/pda/registration](http://www.dcs.wisc.edu/pda/registration)

Phone, fax or online registrations must include payments by credit card or purchase order.

Voluntary information collected to enhance UW programming. Check all that apply.

	Female	Male	Birthdate: Month	Day	Year	
Heritage:		African American		1	Hispanic/Latino	4
		Asian/Pacific Islander		2	White/Other	5
		American Indian/Alaskan Native		3		
Occupational Area:		Educational Services		2	Public Administration. (govt.)	8
		Engineer., Architect., Surveying		3	Retail Trade	9
		Finance, Insurance, Real Estate		4	Social, Recreat., Religious	10
		Health Services (phy/mental)		5	Transport., Comm., Utilities	11
		Manufacturing		6	Wholesale Trade	12
		Protect. Svcs. (police, guards, corr.)		7	Other	13

Are you enrolled in this program primarily for career purposes? Yes No

If you have a disability and desire accommodations please advise us ahead of time. These programs are offered by UW-Madison in cooperation with UW-Extension. No Wisconsin tax dollars were used to print this publication.

DCS-MAC-015-7/09

Fall 2009

## Four-part Series on the Human Brain

During this four-part series you gain a thorough overview of the human brain, discuss the impact of prenatal alcohol use on the developing brain, and share information on the risks of alcohol consumption from adolescence through adulthood.

Ongoing scientific research has greatly enhanced the world's knowledge of brain structure and function, including a better understanding of the impact of alcohol exposure on brain development from pregnancy through adulthood. You will learn through intensive lectures, video-clips, and discussion about technical, research-based information on brain function and structure, as well as about the impact of alcohol on the brain.

Please join us for one, two, three, or all four exciting, high-level workshops on the human brain! Contact Kristi Obmascher, 608-262-8971, toll free 800-442-4617, or [kobmascher@dcs.wisc.edu](mailto:kobmascher@dcs.wisc.edu), for more information.

### Overview of brain structure and function

Monday, October 5, 2009, 8:30 am–12:30 pm

#8705, (4 hours continuing education), Fee: \$59

Dr. Price uses lecture, handouts, and brief videos to provide you with a comprehensive view of brain function and structure including major divisions of the nervous system; brain organization, key structures, and lateralization of function; and the main parts of neurons and communication between neurons. In this workshop you will gain the needed prerequisite information for the remaining three workshops in this series.

### Impact of prenatal alcohol use on brain development

Monday, October 19, 2009, 8:30 am–12:30 pm

#8706, (4 hours continuing education), Fee: \$59

You'll hear Dr. Price give a detailed explanation of fetal brain development while using lecture, handouts, and short videos. She also shares the latest research on the impact of maternal alcohol consumption on brain structure and function, and discusses mediating factors that protect brain growth and development. You need to have an understanding of brain structure and function before attending this workshop.

### Impact of alcohol and other drugs on the human brain

Friday, November 13, 2009, 8:30 am–12:30 pm

#8707, (4 hours continuing education), Fee: \$59

Dr. Price will use lecture, handouts, and brief video-clips to provide the latest research-based information on the human brain, with a focus on the impact of drugs of abuse on short- and long-term brain structure and function. Participants should have an understanding of brain structure and function before attending this workshop.

### Demystifying the adolescent brain

Friday, December 11, 2009, 8:30 am–12:30 pm

#8708, (4 hours continuing education), Fee: \$59

You'll gain an understanding from Dr. Price of the latest research-based information on adolescent brain development, with a focus on the impact of drugs of abuse on short- and long-term brain structure and function. She also discusses other factors that influence adolescent behavior. You need to understand brain structure and function to attend this workshop.

### Your Instructor

Kimberly Chance Price, PhD, earned her master's and doctoral degrees from University of California–Berkeley. She has experience and expertise in research, program evaluation, teaching, clinical outreach, and peer counseling. Dr. Price served as a research fellow with the National Institute on Aging, National Center of Excellence in Women's Health, and National Institute of Mental Health. Her primary research focus has been on improving maternal health and pregnancy outcomes, particularly for at-risk mothers. She also has worked as a birth assistant for low-income and teen mothers. Dr. Price taught several courses as a lecturer at UC-Berkeley and UW-Madison, including behavioral neuroscience, introductory psychology, and child and adolescent psychopharmacology.

#### What others have said about these programs

"Great presentation! She really does a very good seminar."  
—Roger Young

"Knowledgeable in a very complex area of study. A good resource for Wisconsin."  
—Judith Walker