

Continuing Studies

ANNUAL REPORT 2010



Continuing Studies
UNIVERSITY OF WISCONSIN-MADISON

Connecting community to campus for lifelong learning



2010: A Year of Evolving

Successful change rarely happens overnight. It requires seeing where we are, where we want to go, and what we want to bring along or leave behind. Change is more about evolution than revolution.

In 2010 we have engaged with each other and with the campus to create more effective ways to use resources, explore partnering processes, and evaluate our programs and services as we continue to serve nontraditional students and our community.

The people we serve are also engaged in evolution: seeking to improve job skills, prepare for career changes, enhance their lives through new interests, and meet new people. And our staff

is evolving, too, as we welcome new colleagues with fresh skills.

Change without continuity is chaos. That's why some things don't change: popular programs celebrating many years; our dedication to the best service we can provide for nontraditional students; and our pride in being part of a great university.

Please enjoy this account of our achievements in 2010, and join us for a rewarding 2011.

A handwritten signature in black ink that reads "Jim Campbell". The script is fluid and cursive.

Jim Campbell

Interim Dean, Division of Continuing Studies

Enhancing Opportunities for Nontraditional Students and Community Members

Continuing Studies' Adult and Student Services Center (ASSC) helped thousands of people in the Madison area expand their educational achievements, connect with campus resources, and meet the many unique challenges faced by University Special and other returning adult students.

Unemployed adults received support and shared ideas for their job searches

As U.S. economic growth sputtered, more area adults took advantage of ASSC's free Job Search Support Group to get advice, share ideas, and encourage each other. The group's weekly meetings drew near-capacity participation from unemployed professionals.

More adults could afford to return to school through scholarships, grants, and awards

Kristine Broderick and Timothy Fish received Outstanding Returning Adult Student Awards, presented in April by ASSC in cooperation with the Offices of the Dean of the Division of Student Life. Broderick and Fish embody the extraordinary effort maintained by returning adult students to complete their college degrees.



Broderick began her college career in 1965 and completed her undergraduate degree in art last spring. In between she worked full time for more than 40 years, while raising two sons as a single mother, and eventually realized her lifelong dream: becoming an artist.

Fish grew up in poverty on a rural reservation of the Great Muscogee Nation of Oklahoma. After moving to Madison 20 years ago he worked at a wide variety of jobs while completing his G.E.D. and then the Liberal Studies Transfer Program at Madison College.

A father of three and recent recipient of a Wisconsin Idea Fellowship, Fish plans to earn a master's degree in educational leadership to help him help others facing the challenges he's worked hard to overcome.

In addition to Broderick and Fish, more than 40 other non-traditional students—many of whom are single parents or face other special challenges—also received grant or scholarship funds administered by ASSC. Awards this year totaled nearly \$100,000.

Top of page: Sybil Pressprich, ASSC career counselor, chats with community adults during a free career and educational counseling session at the Verona Library.

Reinvesting in Programs and Staff to Enrich Lives and Expand Career Skills

Personal Enrichment

Continuing Studies' Liberal Studies and the Arts presented nearly 400 learning opportunities this year in visual arts, writing, music, languages, publication and web design, dance and movement, history, theatre, literature, and educational travel. New courses and workshops focused on grant writing for visual artists, Shakespeare's cycle of historical dramas, Hindi language and culture, singing Gregorian chant, preparing a portfolio for MFA writing programs, Schoenberg's Vienna, fretboard harmony for guitar, masterworks of modern American drama, the history of book production, piano tuning and technology, and photographic composition and portraiture. The innovative series of music classes in Spanish added Piano Para Adultos.

The **Madison Early Music Festival**, held every summer since 2000, brings together world-renowned performers, scholars, and students of medieval, renaissance, and baroque music for a week of classes, concerts, and lectures. This year the Festival received two gifts from area arts supporters: Bill Wartmann completed the \$100,000 William J. Wartmann Endowment and premiered the Wartmann Prairie concert in cooperation with the Edgerton Arts



Council. And Jane Graff, emeritus faculty member in the School of Human Ecology, made a generous gift and was in turn honored by a concert performance of Claudio Monteverdi's *Vespers*.

Budding writers flourished through Continuing Studies programs

Continuing Studies programs for writers in more than a dozen genres continued to expand this year. Past and present students in these programs—including fiction and nonfiction writers, poets, screenwriters, and authors in other fields—achieved first-time publication, recognition in writing contests, and other kinds of success.

The spring the **Writers' Institute** celebrated 21 years of helping area writers improve their work and connect with professional agents and editors. The summer **Write-by-the-Lake Writer's Retreat**, where students spend a week delving deeply into their genre of choice, expanded to cover 12 genres and drew more than 125 writers.

This year two new instructors joined the Continuing Studies writing faculty:

Laurie Scheer is drawing on her 25-plus years of experience as a screenwriter, producer, and teacher to present a series of online courses for authors looking to break into the burgeoning field of web-based writing.

Christopher Mohar combines experience in creative writing, teaching, literacy tutoring, and engineering to offer a refreshing approach to helping other writers.

Christine DeSmet has taught and administered face-to-face and online writing courses and conferences for two decades. Asked to account for the increasing success of Continuing Studies writing programs, DeSmet notes:

"We're a 'friendly face.' That's one reason we get so many students coming back for more. Yes, our programs are well taught and efficiently run, but more importantly our instructors are friendly and open and we're always here to help struggling writers—and writing can be a struggle!"

"We're a 'friendly face.' That's one reason we get so many students coming back for more."

Learn more about Continuing Studies writing courses—and about students who are getting their work published—at www.dcs.wisc.edu/lisa/online/writing; there you can also subscribe to the free email newsletter *The Writing News*.

Professional Development

Nearly 8,000 professionals in human services, government, and a wide range of other disciplines benefitted from 244 in-person and online courses, seminars, and conferences offered by PDAS. New or enhanced academic offerings included Ethics of In-Home Care Management, a series on Motivational Interviewing, and several major learning events, including:

- the **Public Works Supervisory Academy and Management Institute**, with classes in Madison and Wauwatosa;
- **LGBT Mental Health and Suicide: Guidance for Practitioners**, a workshop focusing on disparities in mental health treatment and related risks for LGBT youth and adults in Wisconsin.
- the **Annual Conference on Distance Teaching and Learning**, which offered a new 'virtual' option, with 31 administrators taking part in the conference via live streamed video. More than 800 people attended the conference in person.

The **Wisconsin Certified Public Manager Program (CPM)** celebrated its 20th anniversary in June at a graduation ceremony for this year's class. Nearly 500 people have now completed the program. Projects developed by this year's graduating class included a citizen academy for the City of Franklin Police, a strategic plan for the Port of Green Bay, and a handbook for Supplementary Security Income caretakers. This coming year introduces an online version of CPM, developed in coordination with UW-Milwaukee's Certificate in Public Administration.



Health professionals learning more about caring for people of all ages

The psychological and social well being of three different age groups were the focus of three major learning events this summer sponsored or cosponsored by Continuing Studies:

Enrollment exceeded expectations for UW-Madison's new **Infant, Early Childhood and Family Mental Health Postgraduate Certificate Program**, which launched in June. Forty-five participants attend the year-long training offered through a unique collaboration between Continuing Studies, the UW School of Medicine and Public Health, the Waisman Center, and the Wisconsin Alliance for Infant Mental Health.

Boys and Girls at Risk: The Emerging Science of Gender Differences brought more than 355 teachers and other professionals to Madison to examine prevention, intervention, and treatment from a gender-sensitive perspective. Educators learned from national adolescent development expert Dr. Leonard Sax on the importance of gender sensitivity so differences don't become limitations.



At the **Summer Institute on Mental Health Disorders and the Older Adult**, nearly 90 practitioners came to Madison to upgrade their knowledge and skills in key areas for providing quality mental health care to older adults. Led by Suzanna Waters-Castillo, who directs aging and long-term care programs for Continuing Studies, specialists from UW-Madison, the Medical College of Wisconsin, and Elder Advocates brought their expertise in geriatric medicine, geriatric psychiatry, gerontology, and continuing education to the Institute.

Waters Castillo also helped develop the **Wisconsin Geriatric Psychiatry Initiative**, a group of individuals working together to enhance mental health services for older adults in Wisconsin and beyond. The Initiative's new website (wgpi.org) provides a knowledge-sharing network designed not just for professionals but for everyone concerned with caring for an elderly parent or other relative or friend.

Top left: Dr. Leonard Sax, speaking at Boys and Girls at Risk conference; at right, Suzanna Waters Castillo directs the Summer Institute. Photos by Jay Salvo

Credit Outreach

UW-Madison Credit Outreach funded distance-education degree opportunities for nontraditional students this year in cytotechnology, education, engineering, library and information science, social work, consumer health advocacy, global health, clinical investigation, and physician assistance.

The nationally renowned **Physician Assistant** program added a distance education version, which includes 12 months of full-time clinical residency in the student's home community. The program aims to improve health-care access for people living in rural Wisconsin and other medically underserved communities.

The new **Cytotechnology certificate**—a partnership between the State Laboratory of Hygiene and UW-Madison—prepares students for the ASCP cytotechnology certification examination and for employment in any cytology laboratory.

This year two cohorts of students are enrolled in UW-Madison's School of Social Work part-time **Master's in Social Work** (MSW) degree, which meets on evenings and weekends. Offered at UW-Madison and at UW-Eau Claire, the new MSW program serves adults working full time. Plans are underway to expand the specialty fields within the degree.



Lifelong Learning

Senior learners have benefited from Continuing Studies programs for nearly 25 years. Among this year's many offerings was a successful two-day experiential workshop on creating well-being and happiness in retirement. Also well received was a free **Positive Aging** summer series Continuing Studies cosponsored with SAIL (Supporting Active Independent Life) and Oakwood Village. The lectures were attended by several hundred area seniors and featured expert UW researchers and practitioners sharing the latest news on improving quality of life during later years.

Lifelong learning programs continued to thrive this year as Continuing Studies strengthened its partnership with PLATO, the Participatory Learning And Teaching Organization. PLATO offered nearly 60 member-led discussion groups to senior learners in topics ranging from classical music, film, and global affairs to philosophy, reminiscence writing, and physics and society. PLATO members also laid the groundwork for *Agora*, an annual literary journal.

Top of page: Assoc. Prof. Craig Atwood, Dept. of Medicine, Geriatrics and Gerontology, presents to a full house at the Positive Aging lecture series. Photo by Joann Schrage

Fostering Partnerships Across Campus and Around Wisconsin

Continuing Studies is the focal point for the partnership between the Schools and Colleges of UW-Madison and UW-Extension. Within the framework of the partnership (see page 11), we provide access to administrative, marketing, communications, and learner services that help integrate the outreach function into the fabric of the university.

Continuing Studies partners with campus to

- provide critical infrastructure
- make degree and credit programs available to working adults and nontraditional learners
- enable noncredit programming across campus
- enhance the public-service activities of students, faculty, and staff; and
- increase public awareness of how the state benefits from UW-Madison outreach efforts.

Following are a few highlights of programs offered by our campus partners in 2010.



School of Business

Executive Education

Real-world solutions don't always fit a cookie-cutter template, and there is rarely one solution to all problems. That's why UW Executive Education works with individuals, companies, and associations to create specialized continuing education programs and certificates. Such collaboration has led to innovative, flexible programs tailored to meet specific business objectives. Among the offerings are the Certificates of Professional Development (CPDs) and Master Practitioner Designations (MPDs). Professionals and managers can earn CPDs upon completing specific core and elective courses and can work on a specific company-sponsored project to earn an MPD. By focusing on increasing skills in management effectiveness, operational efficiency, and financial prosperity, UW Executive Education has earned a national and international reputation for business leadership, and in 2010 helped more than 1,900 business professionals enhance their skills.

Small Business Development Center (SBDC)

By helping businesses start and thrive, the SBDC helps grow jobs; and the economic impact from those firms and jobs help grow communities.

Top of page: S. Kevin Nugent from Brazelton Institute with young family at the Infant and Mental Health Conference. Photo by Jay Salvo

One of the many Wisconsin businesses helped by SBDC this year is NCD Technologies, a firm started by Patrick Heaney, a former UW-Madison PhD student. With assistance from Jack Reiners, SBDC business counselor, Heaney successfully applied for a grant in business-innovation research from the National Science Foundation. Heaney also placed in the top 12 of the Governor's Business Plan Competition this year.

NCD Technologies produces nanocrystalline diamond coatings that enhance the efficiency of microcomponents in a variety of fields. As he continues to receive counseling from SBDC, Heaney has now formed a strategic alliance with a manufacturer and distributor in Janesville and plans to build a commercial deposition chamber in 2011.

School of Education

Hundreds of teachers, school counselors, administrators, and other school personnel from throughout Wisconsin—and young people from throughout Dane County—took part in Education Outreach and Partnerships (EOP) programs during 2010. Among the innovative programs for young people is the week-long **Movin' Minds**, which combines academics and healthy-living education for middle schoolers.

One Movin' Minds participant was a 12-year-old Dane County student who has been diagnosed with ADHD and has faced numerous challenges, including the recent death of her mother. Her grandmother wrote to EOP:

"I cannot begin to speak my gratitude to...the long list of staff and volunteers who put the program together. Our student was the happy beneficiary. [She] is not among the targeted Gifted and Talented. She does not like school and struggles with doing the minimum...she is the very kind of child who needs such enriching, positive experiences. Thank you."

School of Engineering

Engineering Professional Development (EPD)

Among the hundreds of innovative programs with which EPD Engineering Professional Development remained a national leader in continuing education is a multidisciplinary pilot program already increasing operational excellence for three biotech and medical-device companies, including NeoClone here in Madison.

Scientists and managers in such companies often lack important manufacturing experience and industrial engineering skills. The pilot program deploys methods from quick-response manufacturing, lean, and six-sigma to improve the discovery-through-order-fulfillment process. Engineering faculty go to the companies' facilities to teach the scientists and managers how to reduce lead-time, variability, and costs and how to improve process quality.

The program has made everything easier for us—including project planning, scheduling, and management—and has reduced stress levels and overtime."

One scientist at a participating company wrote:

"Before the program we encountered periods when our processes didn't produce acceptable results. Our on-time delivery was in the mid-60 percent range. Through the project we instituted a weekly process check, and our on-time delivery rate has improved to 95 percent. The program has made everything easier for us—including project planning, scheduling, and management—and has reduced stress levels and overtime."

School of Human Ecology

One important new initiative from Human Ecology is the **Formando Lazos Familiares Project**, which creates relationships and community-based solutions to prevent domestic violence in Madison's Latino families through workshops, education, and social support.

Supported by an Ira and Ineva Reilly Baldwin Wisconsin Idea Endowment, the project trains social service providers to help families cope with stressors that can cause domestic violence. Presented in Spanish, Formando Lazos workshops create space for reflection on family communication. The project presents a unique opportunity to develop enduring, community-based solutions to family conflict. Community professionals learn a new facilitation method based on cooperative learning rather than expert lectures. The knowledge and experience gained at the workshops will be developed into a radio novella for additional educational outreach.

This year also saw the launch of a new undergraduate degree in nonprofit and community studies, developed by the Center for Nonprofits within the School.

The Center also expanded the **Communiversality** series, which it cosponsors with St. Mary's Hospital, the Brittingham Fund, and other organizations. This series of free lectures and discussion sessions explores innovative models of addressing contemporary social and nonprofit issues. Since 2008 more than 2,000 people have attended, including nonprofit executives, their staff, volunteers, and boards of directors; students, faculty, and staff from across UW-Madison; and others in the Madison area. Each session is followed by a networking reception.

School of Library and Information Studies

Continuing Education Services (SLIS-CES)

The majority of Wisconsin's 11 federally recognized American Indian nations maintain libraries, archives, and museums that preserve and make accessible priceless tribal histories, languages, and cultures. Tribal librarians, archivists, and museum curators play a critical role in preserving and sharing the stories of native communities through oral history projects, government records, family genealogies, and cultural objects.

This year SLIS-CES hosted **Convening Culture Keepers**, the first statewide gathering of tribal librarians, archivists, and museum curators. Held on the Oneida Nation of Wisconsin near Green Bay, the event brought together specialists from reservation communities across Wisconsin to share experiences, learn of new developments in the field, and met Loriene Roy, past president of the American Library Association and international leader in library services to indigenous populations.

Over the next three years SLIS-CES will coordinate five more Convening Culture Keepers gatherings, circulating among tribal communities to enhance geographic accessibility. The conferences support culturally relevant information services to American Indian communities through participatory discussions, workshops, and trainings on topics such as archival best practices, digital collections, indigenous knowledge organization, language revitalization techniques, and oral history projects.

The result of a grant proposal by a team of SLIS students, faculty, and staff in collaboration with tribal preservationists, the Convening Culture Keepers mini-conferences are funded by \$115,000 from the Ira and Ineva Reilly Baldwin Wisconsin Idea Endowment and the Morgridge Center for Public Service.

School of Medicine and Public Health

Office of Rural Health/TRAIN Wisconsin

The Office of Continuing Professional Development (OCPD) in Medicine and Public Health is continuing to work in conjunction with various state and nonprofit agencies to develop and market continuing education for the public health workforce. **TRAIN Wisconsin** is a free tool that allows public health workers to access a wide array of continuing education activities.

In one recent project completed with funding from the UW Office of Rural Health, select presentations from the 2010 Emergency Care and Trauma Symposium were digitally captured and posted on TRAIN Wisconsin for emergency medical technicians and hospital staff in emergency medical services. Independent presentations were also captured via MediaSite Live. Public health workers throughout the state can now access 12 hours of free continuing education at TRAIN Wisconsin.

School of Nursing

The Continuing Education wing of the School of Nursing continued to expand its learning opportunities this year. Online courses focused on topics ranging from Alzheimer's disease and antimicrobial resistance to stem-cell research and Wisconsin's Public Health Nursing Practice Model.

Since 2002, nurse educators from Continuing Education in Nursing have worked with nursing supervisors at Wisconsin Physicians Service (WPS) to provide in-person and online programs for WPS nursing staff. UW-Madison faculty present six programs per year at the WPS campus in Madison, with simultaneous webcast to the Bloomington, Minn. office. Topics this year included H1N1, behavioral health, and pain management.



An average of nearly 200 nurses attend the learning sessions. Their evaluations continue to attest to the value of the sessions in keeping nurses up-to-date and knowledgeable, resulting more efficient claims management and patient service.

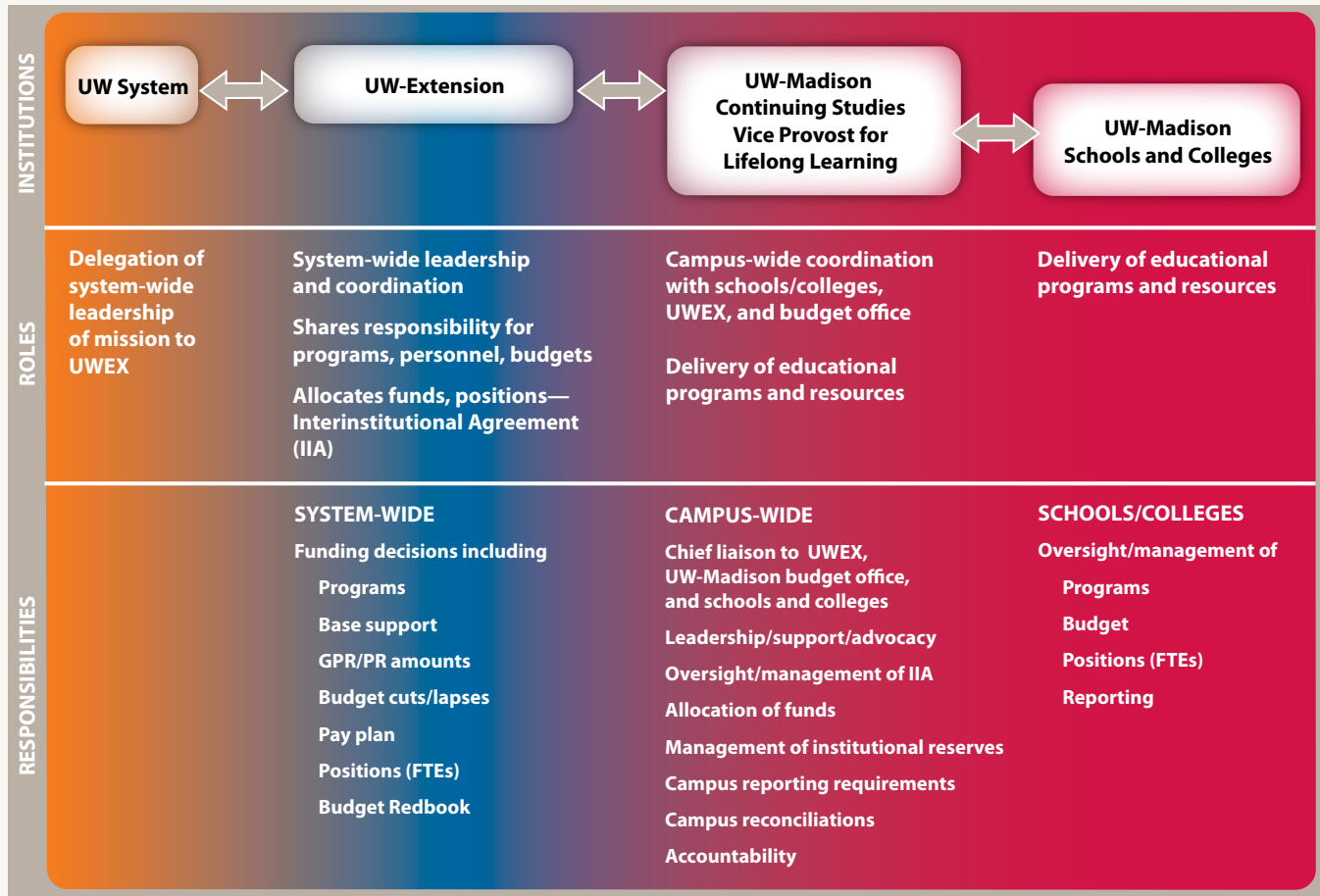
School of Pharmacy

Extension Services in Pharmacy offered in-person programs, webinars, independent learning courses, and other learning opportunities. One highlight was the **Fall Distance Learning Experience**, held Tuesday evenings over an eight-week period. The program is available as a weekly webinar and in an independent learning mode for pharmacists whose schedules don't allow participation in a regularly scheduled class for eight consecutive weeks.

The 2010 Learning Experience provided an in-depth analysis of the role of the pharmacist in preventing and managing diabetes, a disease whose prevalence continues to increase in Wisconsin and around the United States.

Top of page: Prof. Susan Heidrich was a presenter at the Positive Aging lecture Series in summer 2010.
Photo by Joann Schrage

UW-Madison's Role in the Continuing Education Structure Within the UW System



Continuing Education Programs 2009-2010

| DIVISION OF CONTINUING STUDIES | # of programs | # of participants |
|--|----------------------|--------------------------|
| Continuing Studies programs/participants (noncredit) | | |
| In-person programs, courses, conferences | 597 | 17,033 |
| Online courses | 35 | 609 |
| Credit Outreach programs/enrollments | 225 | 2,200 |
| Students and community adults served | | |
| Special and Guest student enrollments | | 4,579 |
| Advising/counseling on and off campus | | 6,602 |
| Total programs and participants | 857 | 30,023 |
| UW-MADISON SCHOOLS AND COLLEGES | | |
| | | |
| SCHOOL OF BUSINESS | # of programs | # of participants |
| Executive Education | | |
| In-person courses | 126 | 1,922 |
| Online courses | 1 | 30 |
| Small Business Development Center (SBDC) | | |
| Educational programs | 116 | 2,994 |
| Free business counseling/advising for firms | | 261 |
| Free business hotline service (WI Business AnswerLine) | | 2,213 |
| Total programs and participants | 243 | 7,420 |
| | | |
| SCHOOL OF EDUCATION | # of programs | # of participants |
| In-person courses | 8 | 1,164 |
| Online courses | 1 | 15 |
| Total programs and participants | | 1,179 |
| | | |

| SCHOOL OF ENGINEERING | # of programs | # of participants |
|---|----------------------|--------------------------|
| In-person courses | 306 | 7,244 |
| Online courses | 8 | 30 |
| Transportation Info. Center | 48 | 2,044 |
| Total programs and participants | 402 | 9,318 |
| | | |
| SCHOOL OF HUMAN ECOLOGY | # of programs | # of participants |
| In-person and online courses | 11 | 365 |
| Total programs and participants | | 365 |
| | | |
| SCHOOL OF LIBRARY AND INFO. STUDIES | # of programs | # of participants |
| In-person courses | 6 | 130 |
| Online courses | 18 | 579 |
| Total programs and participants | 24 | 709 |
| | | |
| SCHOOL OF MEDICINE AND PUBLIC HEALTH | # of programs | # of participants |
| In-person courses | 40 | 4,760 |
| Online courses | 210 | 27,752 |
| Total programs and participants | 50 | 32,512 |
| | | |
| SCHOOL OF NURSING | # of programs | # of participants |
| In-person courses | 19 | 1,559 |
| Online courses | 98 | 1,409 |
| Total programs and participants | 117 | 2,968 |
| | | |
| SCHOOL OF PHARMACY | # of programs | # of participants |
| In-person and online courses | 280 | 6,506 |
| Educational services: newsletters, podcasts, etc. | 45 | 2,518 users |
| Total programs and participants | 325 | 9,024 |
| | | |
| TOTAL SERVED BY CONT. STUDIES AND UW-MADISON CONT. EDUC./OUTREACH PROGRAMS | | 93,518 |

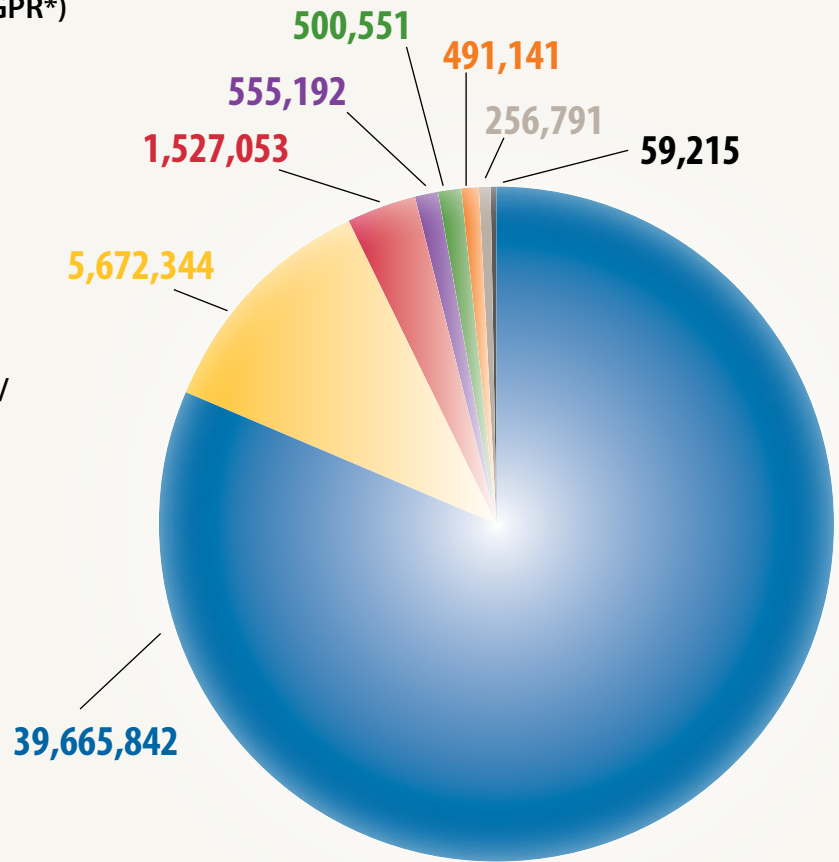
Meeting Continuing Education Needs of Working Adults

| Professional Master's | School/College | Modality |
|--|----------------------------|--------------------|
| ME - Engine Systems | Engineering | Distance Education |
| ME - Professional Practice | Engineering | Distance Education |
| ME - Technical Japanese | Engineering | Distance Education |
| ME - Polymer Engineering and Science | Engineering | Blended |
| MS - Power Electronics | Engineering | Blended |
| MS - Controls | Engineering | Blended |
| MS - Professional Educators | Education | Blended |
| PhD in Ed Leadership - Executive version | Education | Blended |
| MS - ELPA (Oshkosh collaborative) | Education | Evening/Weekend |
| MA - Library Science | Letters and Science | Distance Education |
| MS - Social Work | Letters and Science | Evening/Weekend |
| MS - Biotechnology | Medicine and Public Health | Evening |
| MS - Clinical Investigation | Medicine and Public Health | Blended |
| Master of Physician Assistant Studies | Medicine and Public Health | Distance Education |
| Credit Certificates | School/College | Modality |
| Polymer Engineering and Science | Engineering | Distance Education |
| Technical Japanese Studies | Engineering | Distance Education |
| Mentoring | Education | Evening/Weekend |
| Master Administrator Capstone | Education | Blended |
| Bioinformatics Capstone | Medicine and Public Health | |
| Clinical Research Capstone | Medicine and Public Health | |
| Lab Quality Management Capstone | Medicine and Public Health | Distance Education |
| Global Health Capstone | Medicine and Public Health | Evening |
| Professional French Capstone | Letters and Science | |
| Geographic Info Systems Capstone | Letters and Science | |
| Consumer Health Advocacy Capstone | Law | |
| Type 2 Translational Research Capstone | Medicine and Public Health | |
| Cytotechnology | Medicine and Public Health | Intensive |
| Noncredit Certificates | School/College | Modality |
| Advanced Management and Leadership | Business | Face-to-face |
| Applied Marketing | Business | Face-to-face |

| Noncredit Certificates (continued) | School/College | Modality |
|---|-----------------------|--------------------|
| Business Acumen | Business | Face-to-face |
| Fundamentals of Management | Business | Face-to-face |
| Product Management | Business | Face-to-face |
| Project Mgmt Master Certificate | Business | Face-to-face |
| Purchasing and Supply Chain Mgmt | Business | Face-to-face |
| Sales Management Certificate | Business | Face-to-face |
| Sales Professional | Business | Face-to-face |
| Six Sigma (Yellow, Green, or Black Belts) | Business | Face-to-face |
| Supply Chain Leadership | Business | Face-to-face |
| Transportation and Logistics | Business | Face-to-face |
| Technical Leadership | Business | Face-to-face |
| Maintenance Management | Engineering | Face-to-face |
| Operations Management | Engineering | Face-to-face |
| Commissioning Process Certifications | Engineering | Face-to-face |
| Laser Welding | Engineering | Face-to-face |
| Technical Leadership | Engineering | Face-to-face |
| Disaster Management | Engineering | Face-to-face |
| Johnes Disease | Veterinary Medicine | Distance Education |
| Fish Disease | Veterinary Medicine | Distance Education |
| FASD Training of Trainers | Continuing Studies | Face-to-face |
| Infant and Early Childhood Mental Health | Continuing Studies | Face-to-face |
| Intoxicated Driver | Continuing Studies | Face-to-face |
| Enterprise Management Academy | Continuing Studies | Face-to-face |
| Fire Service Leadership and Management | Continuing Studies | Face-to-face |
| Distance Education Certificate | Continuing Studies | Distance Education |
| Online Teaching | Continuing Studies | Distance Education |
| Substance Abuse Counseling | Continuing Studies | Face-to-face |
| Case Mgmt and Long Term Care | Continuing Studies | Face-to-face |
| Mental Health and the Older Adult | Continuing Studies | Face-to-face |
| Certified Public Manager | Continuing Studies | Face-to-face |
| Public Works Supervisory Academy | Continuing Studies | Face-to-face |
| Divorce Mediation | Continuing Studies | Face-to-face |
| Business Spanish | Continuing Studies | Distance Education |

Continuing Studies Expenditures for Fiscal Year 2010

- UW-Extension Funded Programs (mostly program revenue, some GPR*)
 - Summer Session Courses (GPR)
 - Adult and Student Services/ Administration (GPR)
 - Summer Music Clinic (program revenue)
 - Grants (e.g. Human Services)
 - Extended Day (evening/weekend/ distance) Courses (GPR)
 - Gift Funding (e.g. scholarships, Odyssey Project)
 - Precollege Science Programs for Minority Students (GPR)
- *GPR = General Purpose Revenue



Connecting community to campus for lifelong learning



Continuing Studies
UNIVERSITY OF WISCONSIN-MADISON

21 N. Park Street, 7th floor
Madison, WI 53715-1218
www.dcs.wisc.edu • 608-262-1156